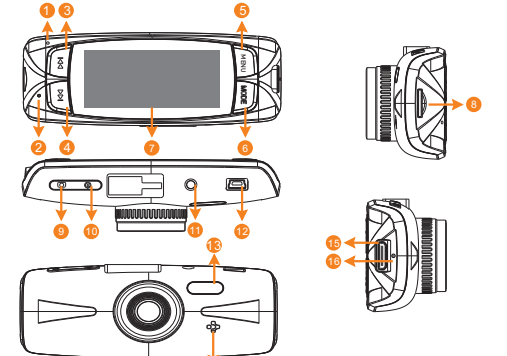


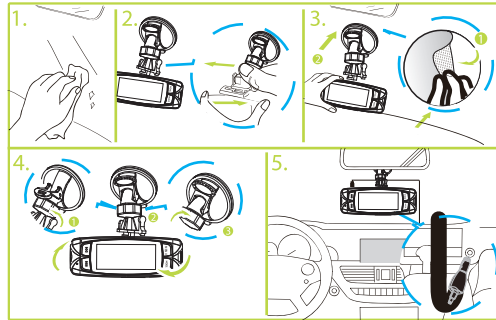
Hardware Installation Guide

Product Structure (Including Hotkey)



- | | |
|---------------------------------|----------------------------------|
| 1. Indicator | 9.Video Recording/Camera/Confirm |
| 2. Microphone | 10.Power switch |
| 3. UP/Zoom in | 11.AV Output Port |
| 4. DOWN/Zoom out | 12.USB/Vehicle Charger Power |
| 5. MENU/SOS Emergency File Lock | SupplyJack |
| 6. MODE Switch | 13.LED lamp |
| 7. 2.7-Inch TFT Display Screen | 14.Speaker |
| 8. Micro-SD Card Slot | 15.HDMI Output Jack |
| | 16.Reset key |

Installation and Fixation



1. Please insert the memory card into the SD Card Slot with the specified direction, and then use the bracket to install the device inside the car.
2. When using the bracket, please choose the position carefully. Do not place the device in the position that blocks the driver's sight or affects the work of the airbags.
3. If there is any splotch, fingerprints or other kinds of smudginess on the windshield, please wipe clean it before installing.

Power On/Off

Please connect the vehicle cigarette lighter and start the engine, the device will be switched on immediately.
When the engine stopped or the vehicle power supply be removed, the device will shutdown automatically.

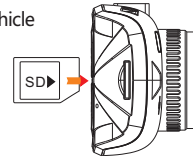
Notes

1. For the users whose vehicle cigarette lighter keeps power supplying after the engine stopped, please unplug the car charger before leaving the vehicle.
2. Please use Class 6 or above Micro SD card

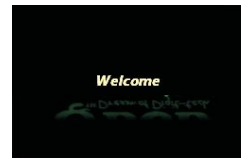
Software Operation

Switch On

1. Insert the memory card
2. Connect the car charger into the vehicle cigarette lighter and the device
3. Start the vehicle.
4. The device be turned on, and start recording automatically.



Opening



Recording image



Recording Settings

After stopped recording, press MENU to enter the recording settings.

Resolution: Set the recording resolution.

Record Cycle: Set the video length in recording cycle mode, or toggle off record cycle function.

WDR: Toggle on or off the WDR function.

EV: Set the exposure value.

Motion Detection: Toggle on or off the motion detection recording function.

Sound Recording: Toggle on or off the sound recording function.

Date Stamp: Toggle on or off the data stamp function.

G-sensor: Set the sensitivity level of the G-sensor file protection.

System Settings

After stopped recording, press MENU twice to enter the system setup.

Date/Time: Set the system time.

Auto Power Off: Set the automatic shutdown time after the power disconnected or keep the device working until the battery run out.

LCD Off: Set the screen automatic off time, or set it as always on.

Beep: Switch on or off the system beep indicator.

Language: Support multiple languages; you can choose the language according to your preferences.

TV Mode: You can toggle between NTSC and PAL when in video output mode.

Frequency: Support 50Hz and 60Hz.

Format: Format the memory card; please backup your data before formatting.

Default Setting: Reset all the settings to the default state.

Version: Check the system version number.

Video Playback

Video-Play Operation

1. After stopped recording, press MODE to enter the video-play mode.
2. Press UP or Down to select the desired video to play.
3. Press CONFIRM to start playing video.
4. Press CONFIRM again to pause the video.

Delete Video

1. After stopped recording, press MODE to enter the video-play mode.
2. Press UP or Down to select the desired video to delete.
3. Press MENU, enter the menu to delete the video or delete all.

Play on Computer

It is recommended to play the video by free software VLC PLAYER. Please go to <http://www.videolan.org/vlc/> to download and install VLC Player.

Recommended PC requirements for 1080P 30fps video playing:

1. Intel Core 2 Duo 2.0GHz or above CPU
2. 2G or above DDRII RAM
3. Graphic card supports DirectX 10 or above